

# No2

By Toa Fraser



Technical Rider and Show Information pack

Contents	Page
About the Show	3
Touring Company	4
Theatre Considerations	5
Staging	5
Set	6
Freight	6
Masking	7
Lighting	7
Short season rig plan	8
Long season rig plan	9
Audio	10
Wardrobe	10
Dressing rooms	10
Contact details	11

All Enquires to:

Andrew Malmo, Producer

Strata Creative Limited

[andrew@stratacreative.co.nz](mailto:andrew@stratacreative.co.nz)

[www.stratacreative.co.nz](http://www.stratacreative.co.nz)

Phone +64 9 337 0369 | Mobile +64 27 473 2480 | PO Box 340 217 Birkenhead, Auckland 0746 New Zealand

## About the Show

We're going to make this place come alive.

Today is the hottest day of the year and Nanna Maria wants a feast. She wants all of the grandkids here, but none of her children – they're all "bloody useless". She wants a big, long table outside and a pig on a spit. She wants to make it real flash, she wants tablecloths and stuff. And a priest. She wants spirits dancing, squabbles in the kitchen and bitching in the backyard. And some beers. And she doesn't want anybody to go hungry. She just wants the miracle of family. Because today Nanna Maria is going to name her successor.

Mixing kava with karaoke, Toa Fraser pushes the culture forward. We celebrate the raucous joy, the shifting dynamics and the chaos that only an extended family knows. And after ten years, Madeleine Sami returns to the stage in the virtuoso performance that took the world by storm.

It's time to come home.

Winner 2000 Edinburgh Fringe First  
Winner 2000 Chapman Tripp Outstanding Performance  
Winner 2000 Chapman Tripp Best NZ Play

*No.2 [2009 production] is available for national and international touring in 2010 and 2011.  
3 – 4 on the road plus a chair...  
Funding support from Creative New Zealand to present this work as tour-ready.*

## Technical Specifications

### Touring Company:

- The Touring Party consists of:

Cast - Madeleine Sami

Technical Manager / Operator – Jo Kilgour

Tour Manager – Josh Hyman

Andrew Malmo - Producer

## The Theatre:

- The performance venue should be well heated or air-conditioned, well lit, cleaned, appropriately staffed (including box office and janitorial personnel), and with equipment therein contained as specifically described in this document. These facilities shall be clear and in good order at the time of load-in and maintained in good order throughout the engagement. The theatre, including all on-stage and back-stage areas must be secure.

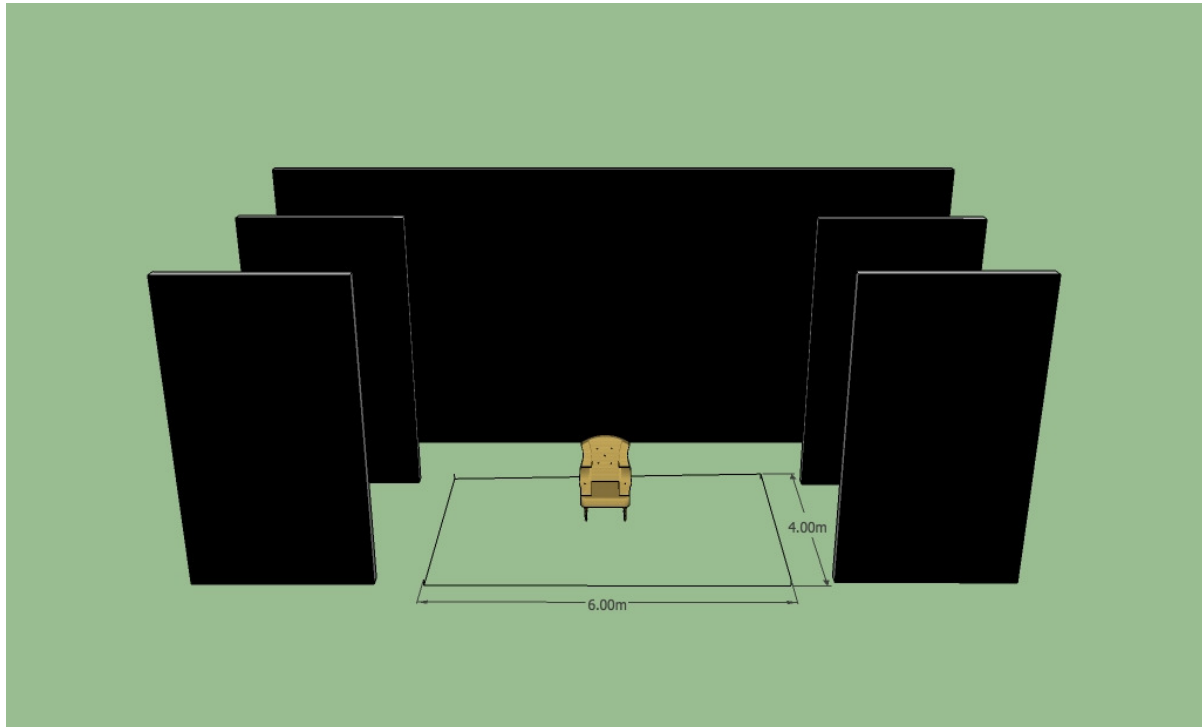
## Staging:

- The Production has been designed principally to tour and can fit into a variety of spaces
- A clean level stage floor is required and it must be Black in colour; if the stage is raised, a set of treads needs to be provided for easy access.
- The Production has been designed with an end-on seating configuration in mind.
- Minimum stage dimensions:
  - Depth: 6m
  - Setting line: 300mm from DS edge of stage
  - Width: 7m
  - Proscenium size: 7m wide x 5m high

---

## Set:

- The company does not travel a floor, the performance area is defined by light and is roughly 6m wide by 4m deep and is usually set at center 300mm upstage from the front edge of stage.
- The company provides a single armchair and this is the only piece of set dressing.



## Freight:

- The production has minimal freighting requirements, the presenter is responsible for ensuring freight is collected and forwarded to the appropriate locations in a timely and safe manner.
- All freight instructions are to be forwarded to the touring crew.
- The chair is the only freighted item and is approximately 1m (D) x 1m (W) x 1m (H)
- The weight of the chair is roughly 25 kilos.

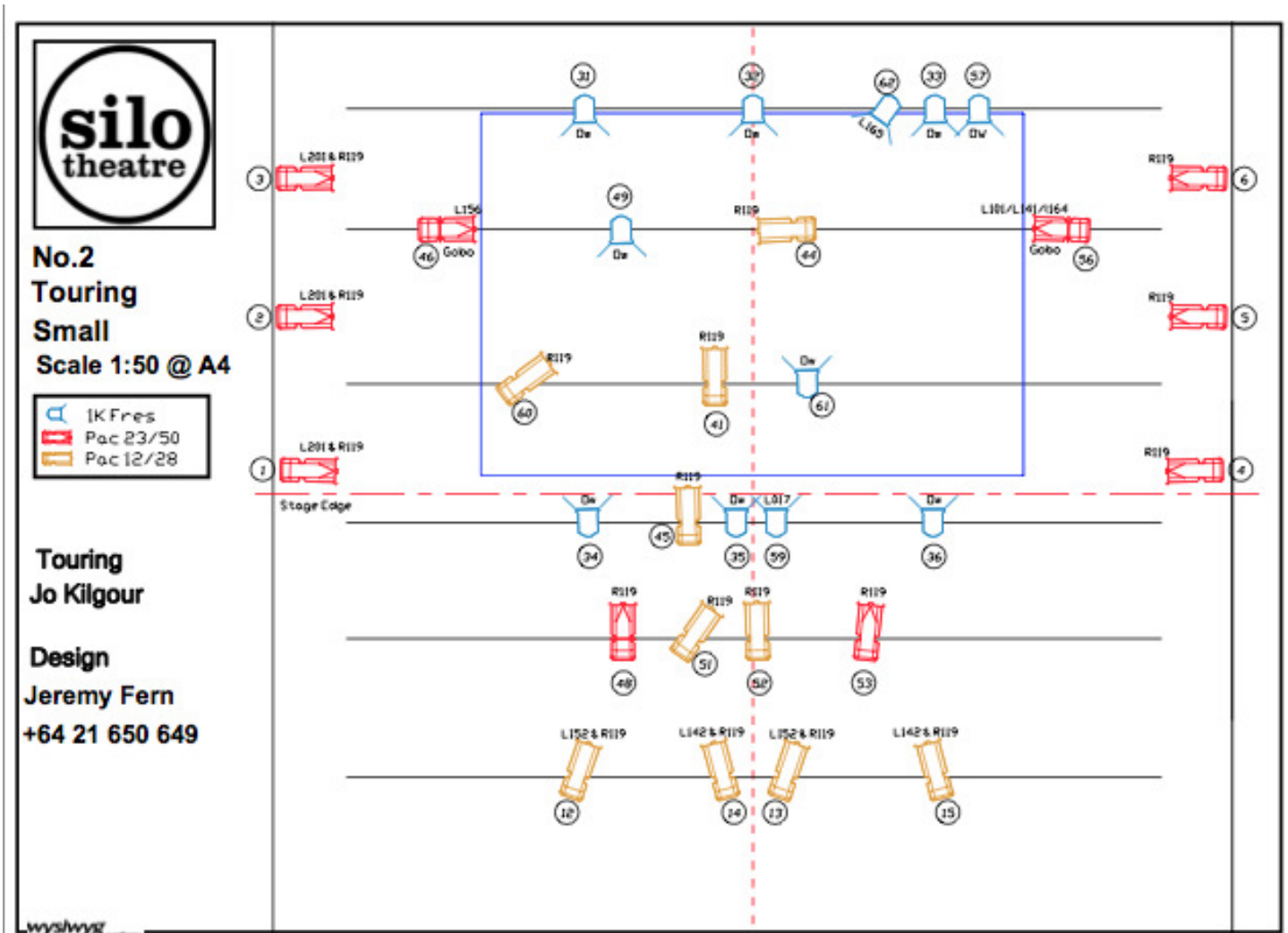
## Masking:

- A standard black box masking setup is required
- Suitable black masking for upstage, wings, grid/ceiling is essential.
- The masking must be neat and tidy preferably with a soft edge.
- The production will endeavor to use the standard theatre mask. However as the performance area is only 4 meters deep we request a black smother or set of tabs approximately 6 meters upstage of the front edge of stage.

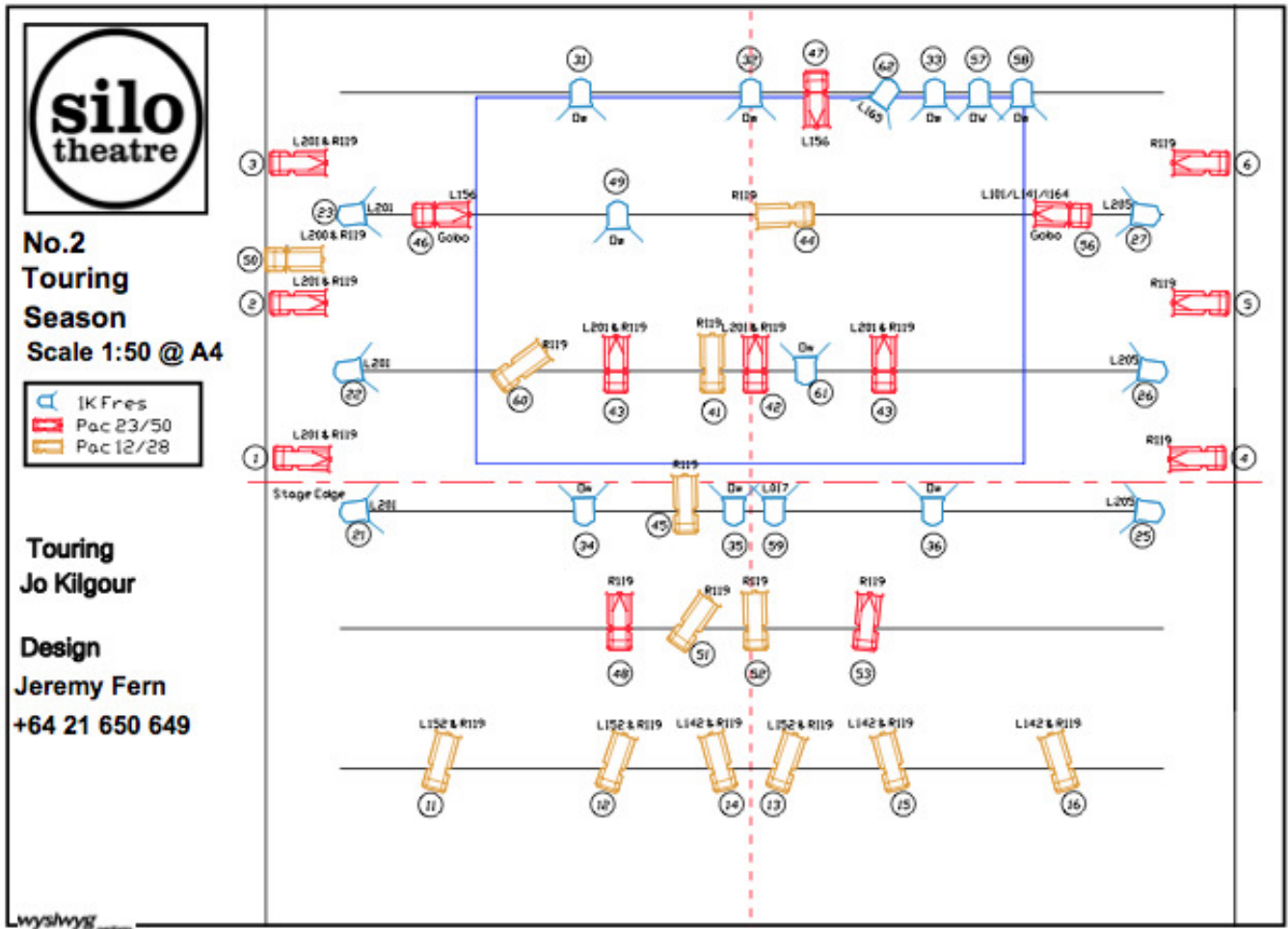
## Lighting:

- The lighting design is split into two distinct designs, one for the purpose of short run quick pack in seasons and the other for longer running engagements.
- There should be as few substitutions as possible and all changes to lamp stock must be discussed with the production team prior to arrival.
- A desk of suitable quality and reliability is required it must have recordable scenes and a “GO” button facility with programmable times.
- Full plans, patch info, gel cut list and cheat sheets are provided as attachments to this document.
- A low res image of the small and large plans are included in the next pages.

## Short Touring lighting rig



## Long run season lighting rig



## Audio:

- The Company does not travel with any sound equipment. All sound equipment is to be supplied by the Presenter. The sound system must be of sufficient size and power to fill the audience area with clear, undistorted sound. The system should be capable of reproducing music suitably arrayed and distributed to provide excellent sound at every seat.
- Two (2) CD players with auto Pause function are required and must be in good working order
- A mixing console with at least 2 stereo or 4 mono channels is required; there must be separate outputs for Front of House and on stage monitors.
- Two (2) on-stage monitor speakers are required positioned in the wings SL and SR of the center of the performance area.

## Wardrobe:

- The company tours their own costumes and access to a washing machine, dryer and iron are required at the venue.

## Dressing Rooms:

- Two dressing rooms are to be provided with access to showers and toilets, make up lights, power and should be warm clean and comfortable. Access to the internet is essential within the dressing room spaces
- One dressing room is required for the cast member and should be the finest in the complex.
- Please supply tea, coffee and bottled water.
- The second dressing room is for the crew and should be of a high standard, stocked once again with tea, coffee and bottled water.

## Contact Details:

### Main Contact:

#### Producer

Andrew Malmo, Strata Creative Limited

[andrew@stratacreative.co.nz](mailto:andrew@stratacreative.co.nz)

[www.stratacreative.co.nz](http://www.stratacreative.co.nz)

Phone +64 9 337 0369 | Mobile +64 27 473 2480 | PO Box 340 217 Birkenhead Auckland 0746 New Zealand

Skype: andrewmalmonz

### Tour Contacts:

#### Technical Manager / Operator:

Jo Kilgour                      Email: [jokilgour@gmail.com](mailto:jokilgour@gmail.com)                      Ph +64 21 791140

#### Tour Management:

Josh Hyman                      Email: [biginz@gmail.com](mailto:biginz@gmail.com)                      Ph: +6421 910321